

Figure 6-1: Rezoning Area on 1947 Aerial Photo
Old Crompond Road, Town of Yorktown
Westchester County, New York
Source: Westchester County GIS

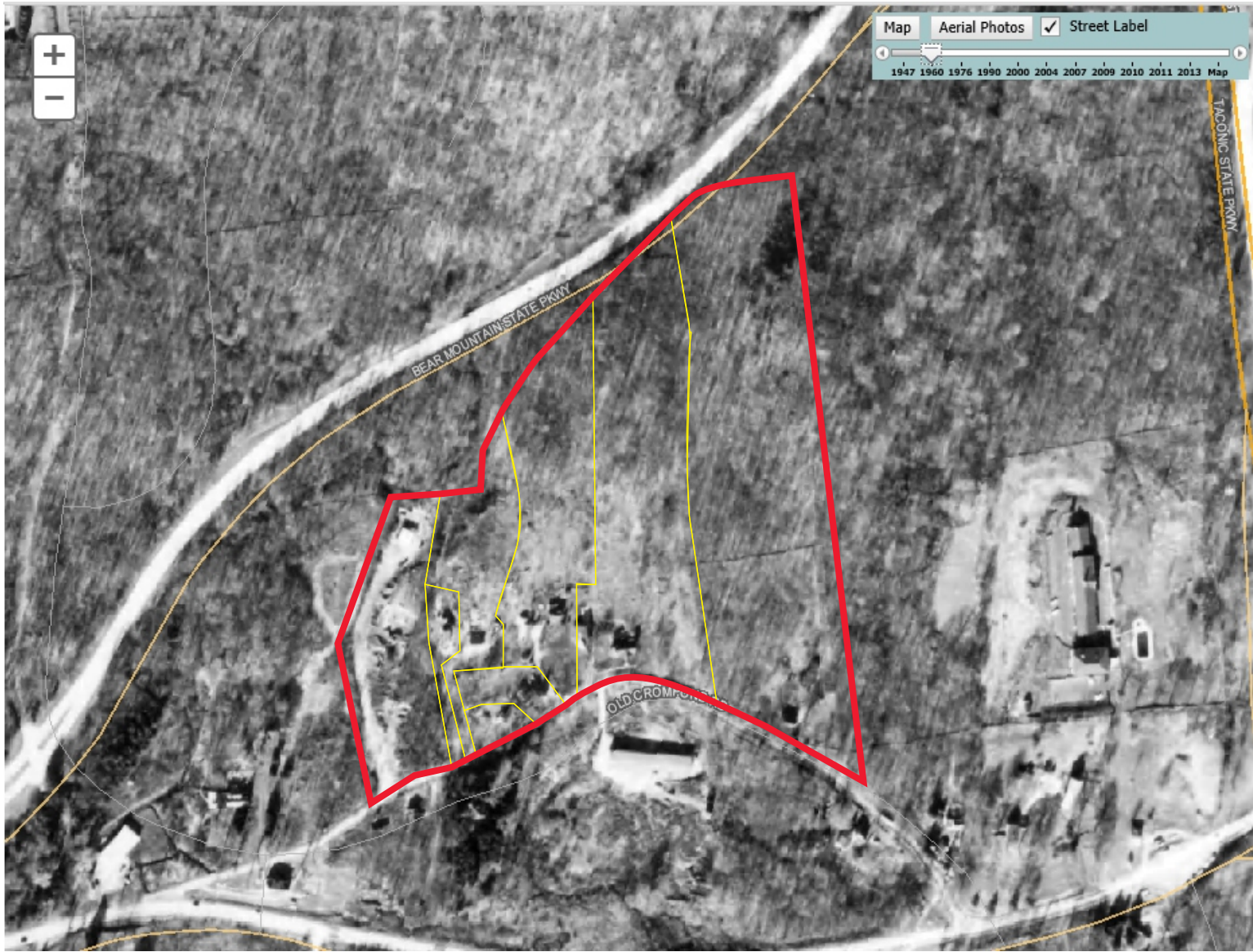


Figure 6-2: Rezoning Area on 1960 Aerial Photo
Old Crompond Road, Town of Yorktown
Westchester County, New York
Source: Westchester County GIS

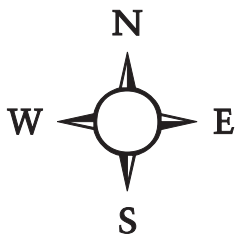


Figure 6-3: Rezoning Area on 1976 Aerial Photo
Old Crompond Road, Town of Yorktown
Westchester County, New York
Source: Westchester County GIS

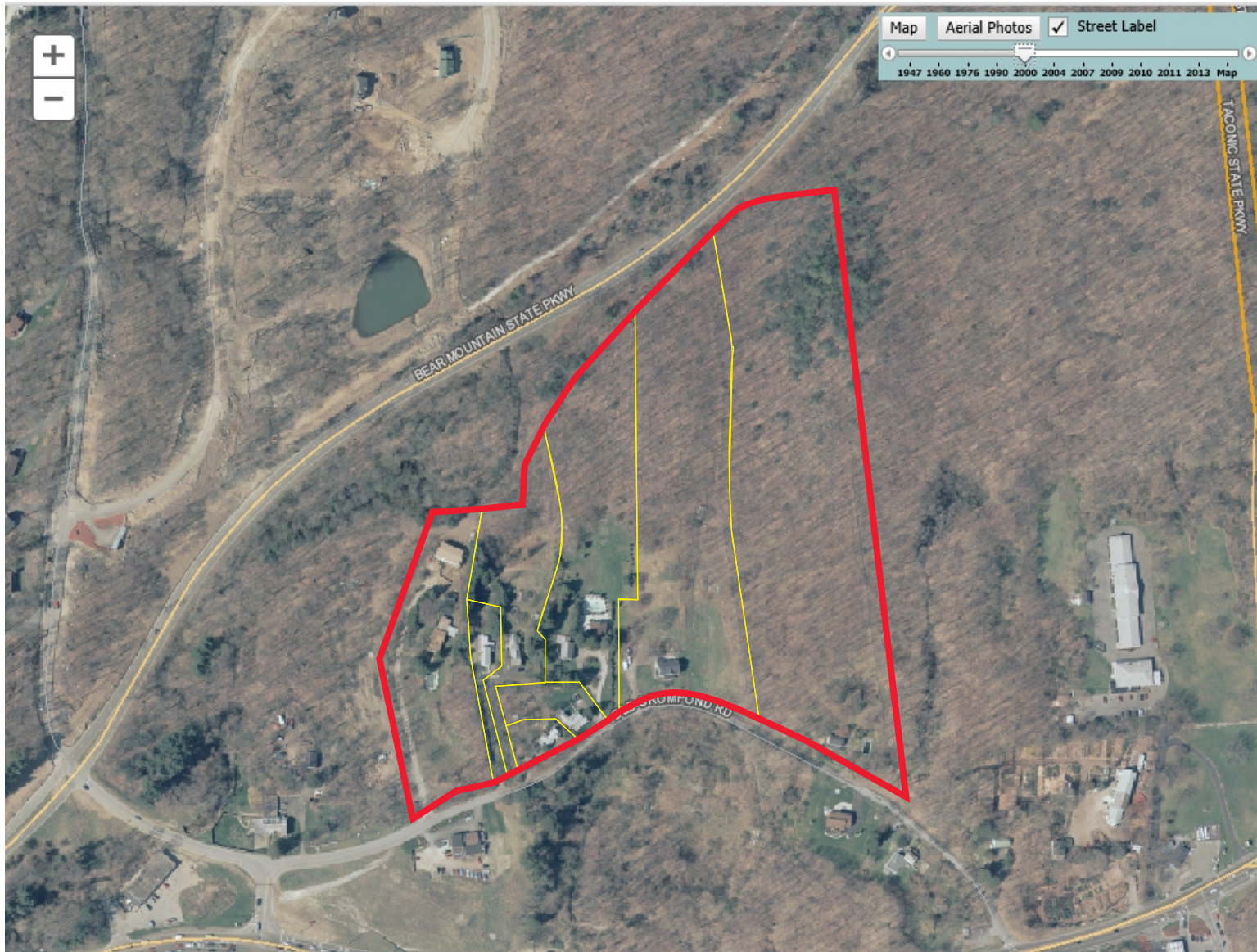


Figure 6-4: Rezoning Area on 2000 Aerial Photo
Old Crompond Road, Town of Yorktown
Westchester County, New York
Source: Westchester County GIS

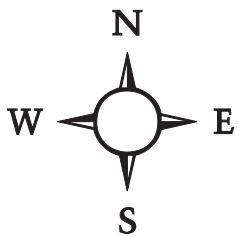


Figure 6-5: Rezoning Area on 2009 Aerial Photo
Old Crompond Road, Town of Yorktown
Westchester County, New York
Source: Westchester County GIS



Figure 6-6: Rezoning Area on 2013 Aerial Photo
Old Crompond Road, Town of Yorktown
Westchester County, New York
Source: Westchester County GIS

